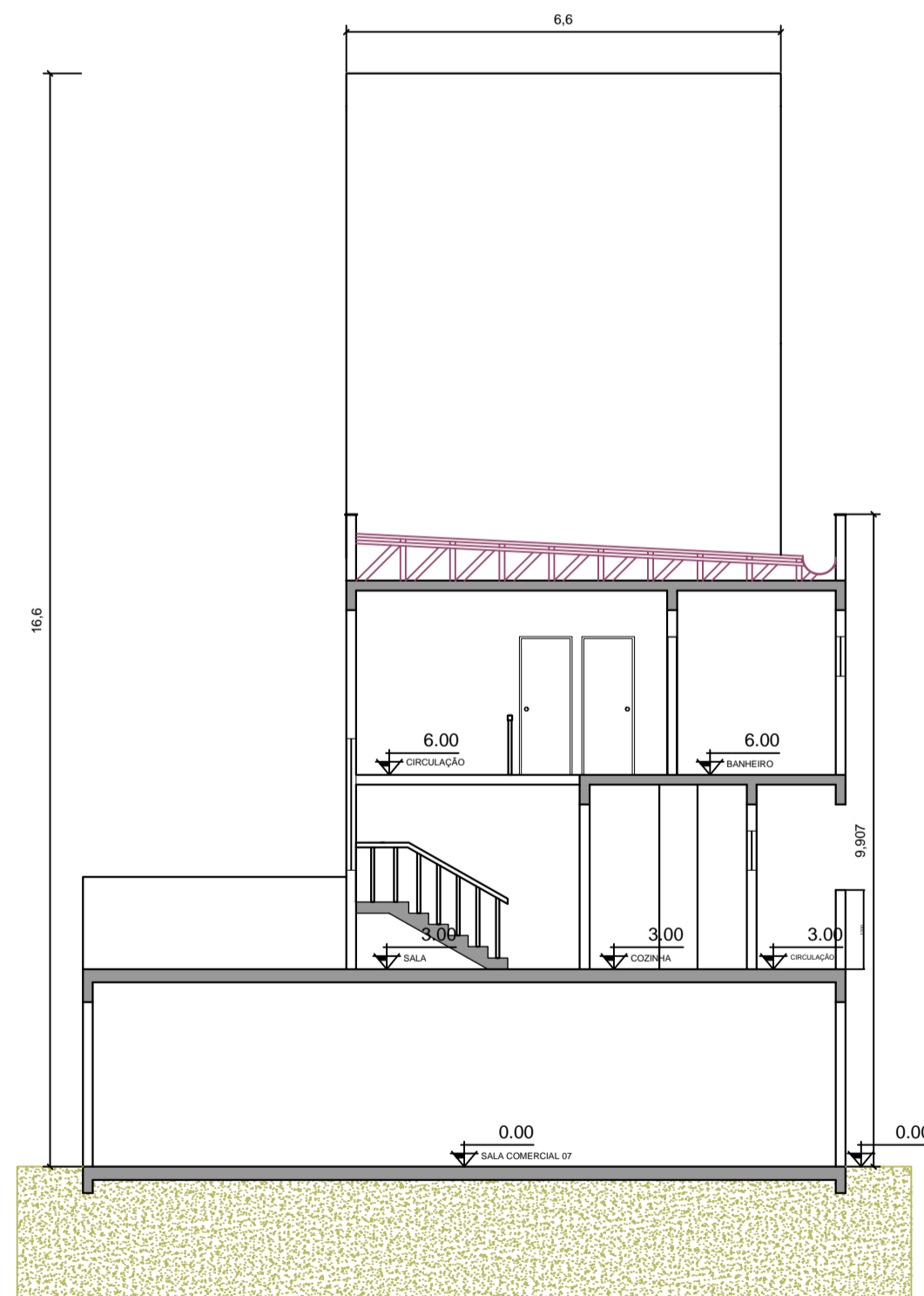
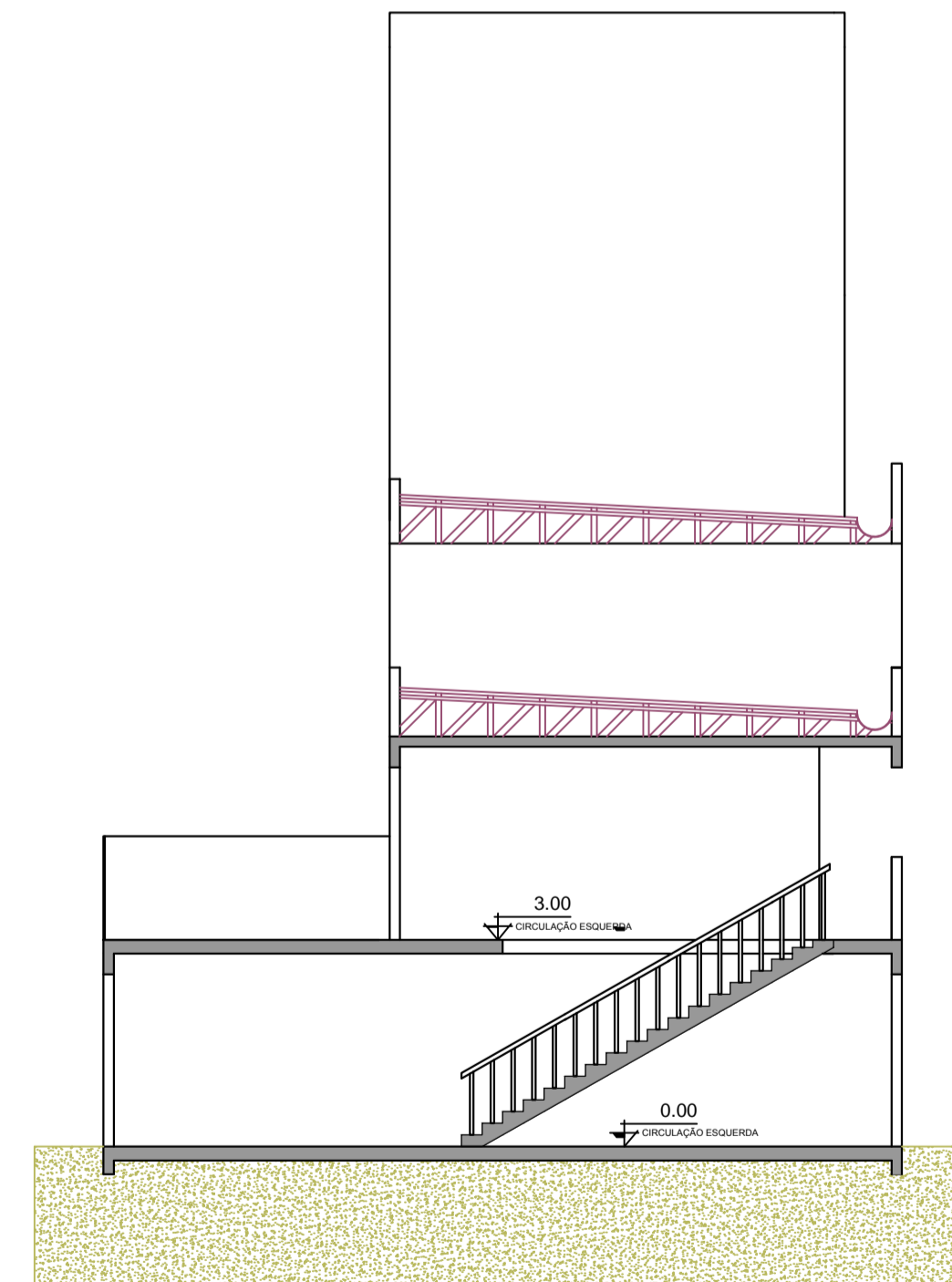


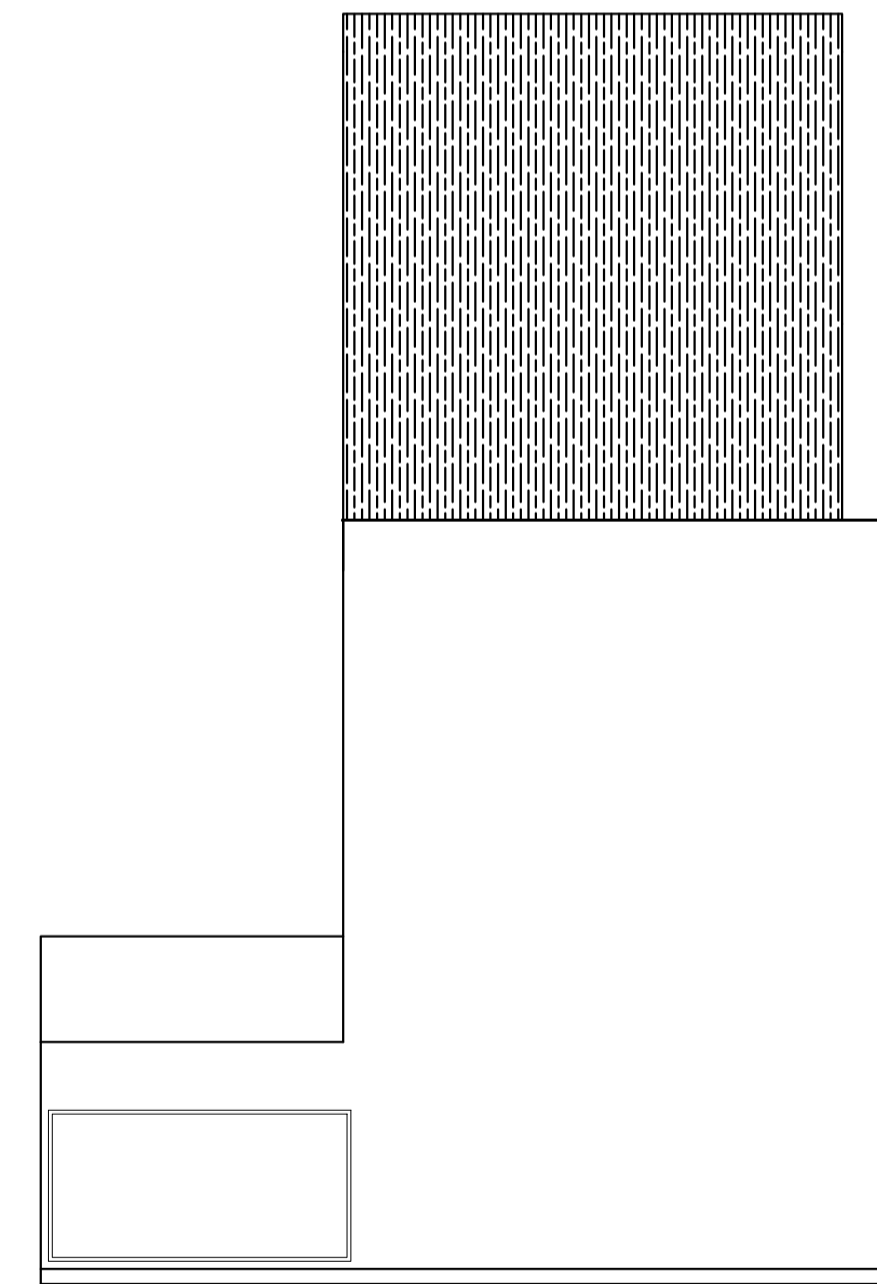
CORTE CC - BLOCO M - MANUELA



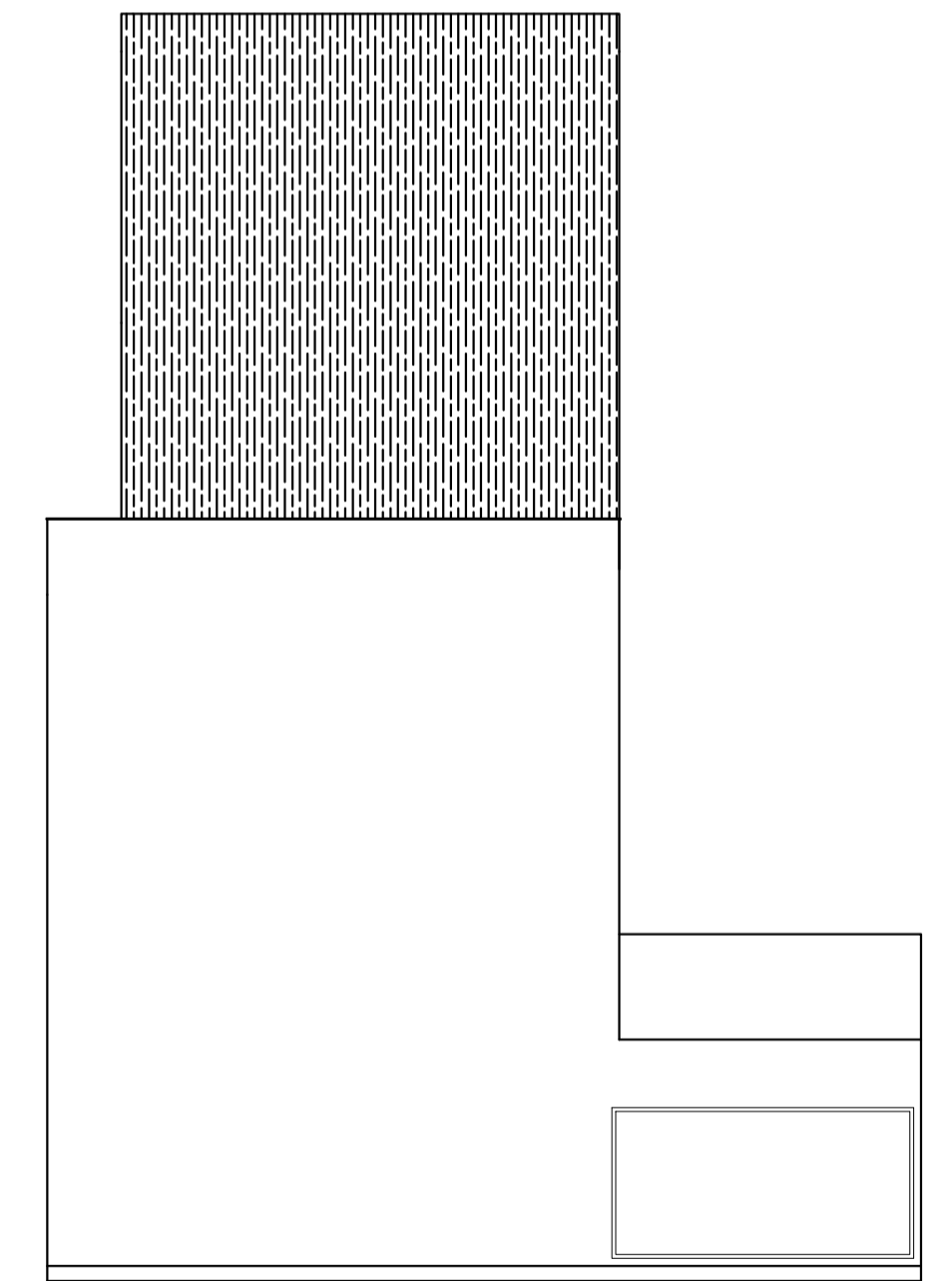
CORTE DD - BLOCO M
MANUELA



CORTE EE - BLOCO M
MANUELA



FACHADA LATERAL - BLOCO M



FACHADA LATERAL - BLOCO M

ESCALA: 1:100

MEC - CENTRO UNIVERSITÁRIO
LEONARDO DA VINCI

CURSO:	ARQUITETURA E URBANISMO	TURMA:	ARQ 15
DISCIPLINA:	TEORIA E PROJETO DE ARQUITETURA V	FOLHA:	
DOCENTE:	CAROLINA VIVIANE NUNES		
ASSUNTO:	TRABALHO INTERDISCIPLINAR - CONJUNTO HIS ANTEPROJETO - CORTES E FACHADAS		
ACADÊMICO:	JANAÍNA CRISTOVÃO KELLY DAIANE PEREIRA BORBA MANUELA LAÍS BENINCA	DATA:	17/07/2014

7/10